

Specification

Customer: _____

Name: LED Power Supply

Model: VHO-200-012B5

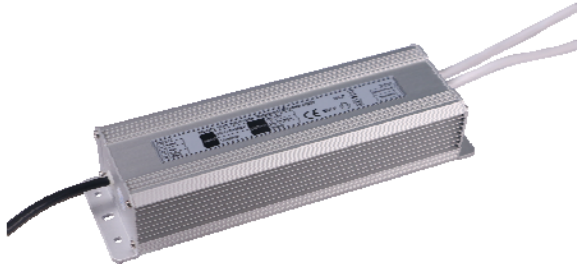
VHO-200-024B5

Customer Approval

Examination	Review	Approve

Manufacture Approval

Drafting	Review	Approve



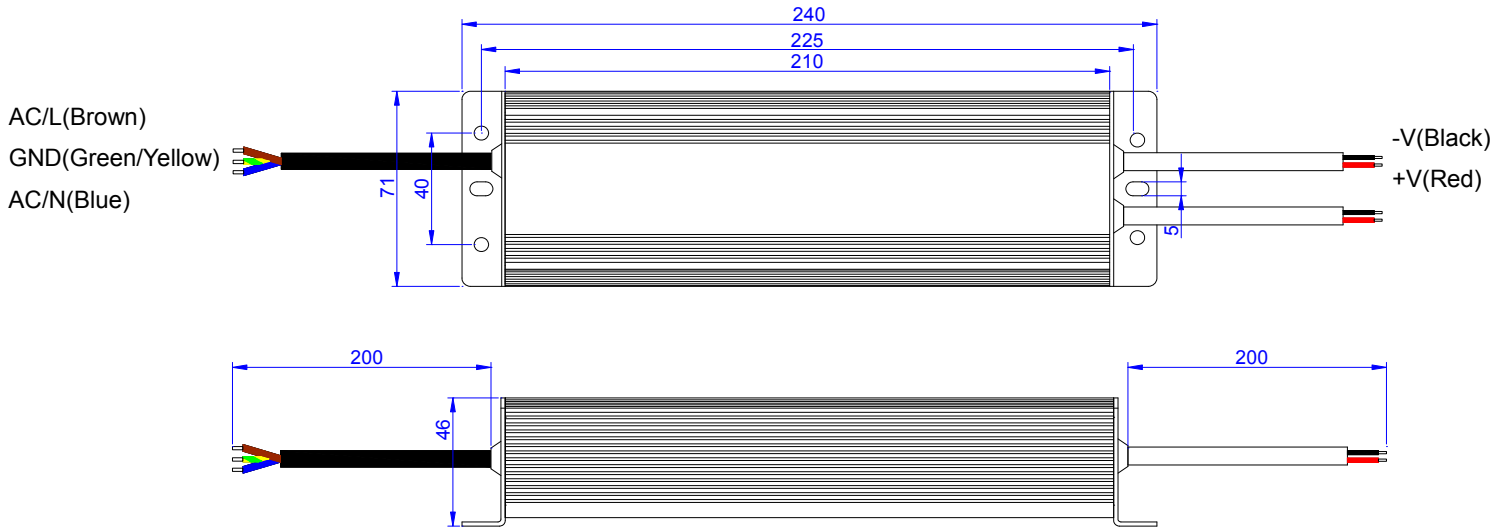
■ Features

- Universal AC input / Full range
- Protections: Short circuit / Over current
- Cooling by free air convection
- IP67 design for indoor or outdoor installations
- Suitable for LED lighting and moving sign applications
- 3 years warranty

■ SPECIFICATION

Model		VHO-200-012B5	VHO-200-024B5
OUTPUT	DC VOLTAGE	12VDC	24VDC
	CURRENT RANGE	0-16.6A	0-8.3A
	RATED CURRENT	16.6A	8.3A
	RATED POWER	200W	
	RIPPLE&NOISE(max)	200mV	200mV
	VOLTAGE TOLERANCE	±0.5V	±0.5V
	LINE REGULATION	0.5%	0.5%
	LOAD REGULATION	4%	2%
	SETUP TIME	<500ms/230VAC	
INPUT	VOLTAGE RANGE	170-265VAC	
	FREQUENCY RANGE	50/60Hz	
	EFFICIENCY(Typ.)	84%	86%
	INRUSH CURRENT(max.)	70A/230Vac	
	AC CURRENT(Typ.)	1.59A /230VAC	1.59A /230VAC
PROTECTION	OVER CURRENT	18.5A	10.5A
	SHORT CIRCUIT	Protection type: shut down o/p voltage with re-power on to recovery	
ENVIRONMENT	WORKING TEMP.	-10~+50 (Refer to output load derating curve)	
	WORKING HUMIDITY	20 ~ 95% RH non-condensing	
	STORAGE TEMP., HUMIDITY	-40 ~ +80 , 10 ~ 95% RH	
SAFETY	SAFETY STANDARDS	CE,SAA	
	WITHSTAND VOLTAGE	I/P-O/P:2KVAC I/P-FG:2KVAC O/P-FG:0.5KVAC	
	ISOLATION RESISTANCE	I/P-O/P, I/P-FG, O/P-FG:100M Ohms / 500VDC / 25 / 70% RH	
OTHERS	DIMENSION	240*71*46mm (L*W*H)	
	PACKING	1.2Kg; 10pcs/13Kg/ 350*261*184mm(L*W*H)	
NOTE	<p>1. All parameters NOT specially mentioned are measured at 230VAC input, rated load and 25 of ambient temperature.</p> <p>2. Ripple&noise are measured at 20MHz of bandwidth by using a 12" twisted pair-wire terminated with a 0.1uf&47uf parallel capacitor.</p> <p>3. Length of set up time is measured at cold first start.</p>		

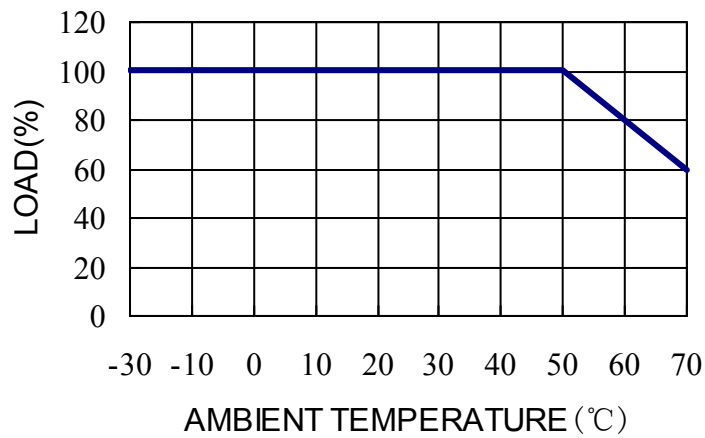
■ Mechanical Specification



Cable Model of input: VDE H03VV²-F 3×0.75mm

Cable Model of output: VDE H03VV²-F 2×0.75mm

■ Derating Curve



■ Static Characteristics

